



# UNIVERGE BLUE™ SHARE

Get Started Guide for Windows®

**PARKER COMMUNICATIONS**  
Parker South Bay  
19789 Northampton Dr.  
Saratoga, CA 95070

...the solution integrating technology and service.

Business Telecom Sales and Service  
CLOUD PREMISE VoIP Digital

**NEC**  
**TOSHIBA**

MikeLorenzen  
Office 408-342-8100  
Cell 408-691-0678  
Mike@parker-south-bay.com





# UNIVERGE BLUE™ SHARE

## CONTENTS

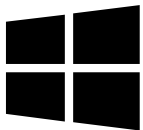
OVERVIEW	3
INSTALLATION	3
APPLICATION MODES	3
BACKUP CONFIGURATION	4
UNIVERGE BLUE™ SHARE WEB APP	5
FILE & FOLDER SHARING	6
UNIVERGE BLUE™ SHARE + MICROSOFT® OFFICE® APPS	8
MICROSOFT® OFFICE® ONLINE	9
MOBILITY	10
FILE RESTORE	11

## OVERVIEW

- › Access files from any computer, the UNIVERGE BLUE™ SHARE web portal, and mobile devices
- › Easily and securely share files with people inside and outside your company
- › Back up your files in real-time to protect against data loss from ransomware, accidental file deletions, and other incidents
- › Follow these steps to get started using UNIVERGE BLUE™ SHARE.

You can also visit <https://univerge.blue/apps> to learn more.

## INSTALLATION



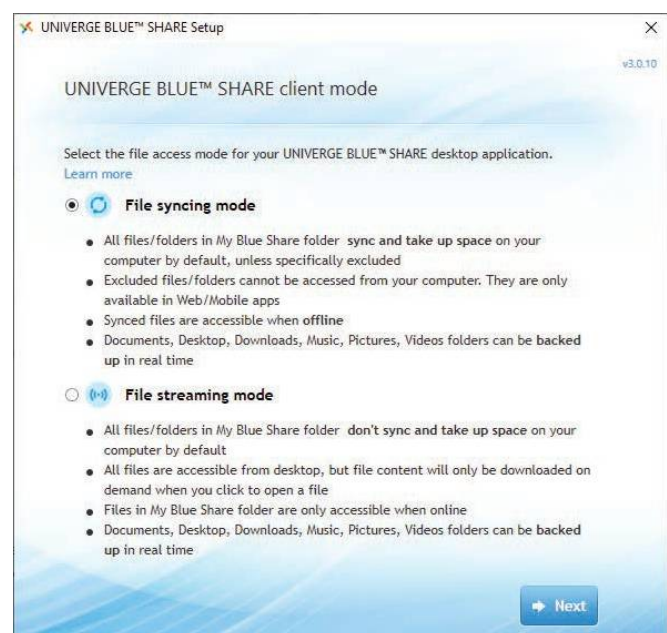
You can download the app at <https://univerge.blue/apps>

Once installed, login using your email address and your UNIVERGE BLUE™ SHARE password.

## APPLICATION MODES

As part of the installation sequence, you will need to choose between the following application modes. File Sync mode works better for those with small to medium file sets and who need to frequently access files while offline.

File Streaming mode generally works better for those with medium to large file sets and smaller hard drives and/or limited network bandwidth.



## BACKUP CONFIGURATION

Once UNIVERGE BLUE™ SHARE is installed on your computer, it creates a designated folder called My Blue Share. All files and folders added to the My Blue Share folder are automatically backed up and available to be accessed from other PCs, Macs, mobile devices, and the UNIVERGE BLUE™ SHARE Web App.

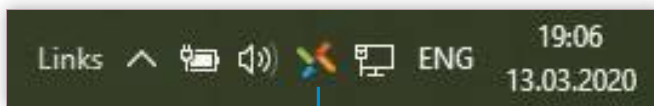
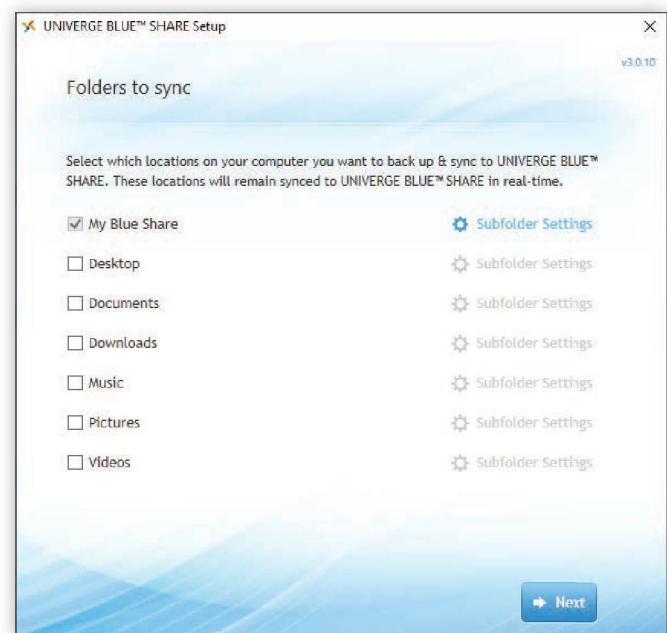
### To add files to My Blue Share, you can:

- Save files to the folder using 'Save As' in Word®, Excel®, PowerPoint® and other programs
- 'Drag and drop' or 'copy and paste' files from other locations on your PC
- You can also create new folders in My Blue Share

In addition to the My Blue Share folder, you can choose to sync and backup Desktop, Documents, Music, Pictures, Videos, and Downloads folders.

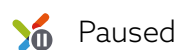
All files and folders added or updated in these locations will be backed up to UNIVERGE BLUE™ SHARE in real time.

You can view UNIVERGE BLUE™ SHARE sync status in the taskbar on the bottom right of your PC.



UNIVERGE BLUE SHARE

The following icons depict various UNIVERGE BLUE™ SHARE statuses:



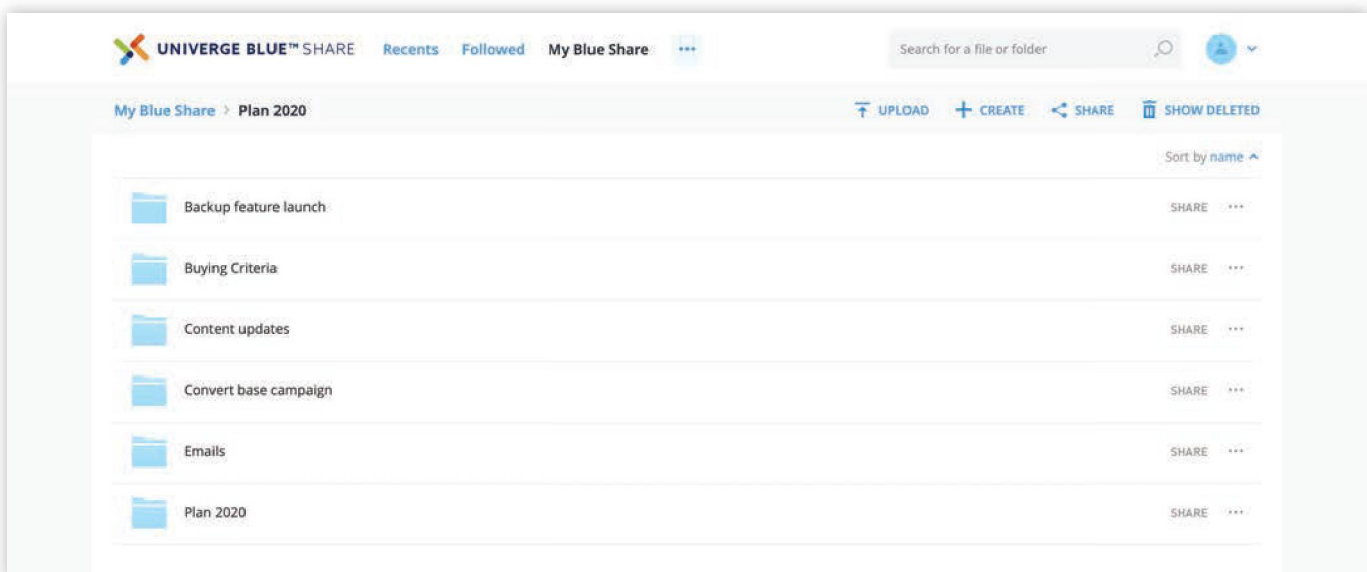
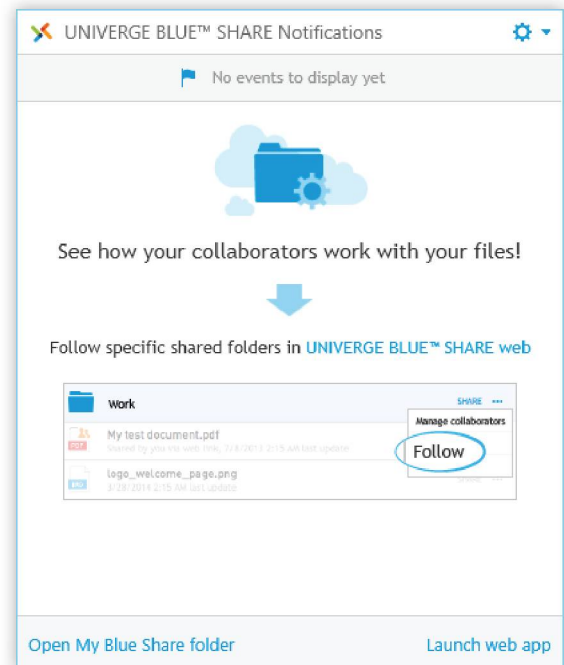
## UNIVERGE BLUE™ SHARE WEB APP

UNIVERGE BLUE™ SHARE Web App enables you to access and manage all of your UNIVERGE BLUE™ SHARE files from a browser.

You can launch the UNIVERGE BLUE™ SHARE Web App in two ways:

1. Right-click on the UNIVERGE BLUE™ SHARE icon in your task bar and choose 'Launch UNIVERGE BLUE™ SHARE web'
2. Login from any web browser at <https://share.univerge.blue>

Note: you will need your UNIVERGE BLUE™ SHARE username and password.



## FILE & FOLDER SHARING

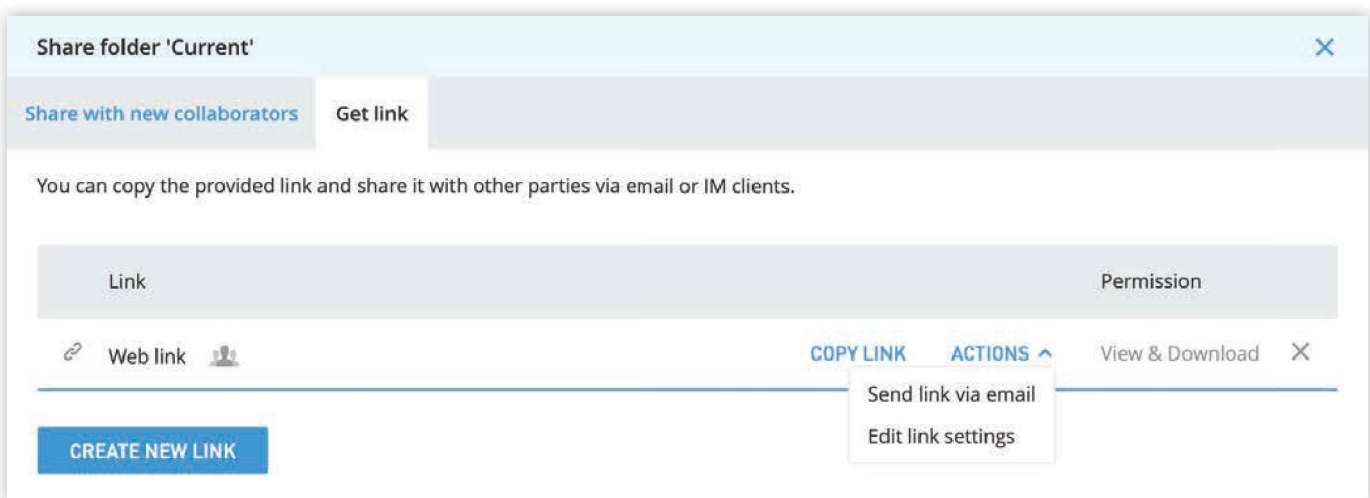
Once you've added files to UNIVERGE BLUE™ SHARE, you can securely share files and folders with people inside and outside your company. There are several different ways to share files:

- **Web Links:** a good way to share content with people who only need short-term access to review a file or group of files. You can share Web Links with anyone, even if they don't subscribe to UNIVERGE BLUE™ SHARE.
- **Collaborative Folder Sharing:** a good sharing option for longer term sharing activities, when multiple people need to access and edit files on an ongoing basis.

### SHARE FILES & FOLDERS VIA WEB LINK

To create Web Links:

- Login to UNIVERGE BLUE™ SHARE Web App
- Select the file or folder you wish to share
- Click 'Share' and choose 'Get Link' tab
- Copy link
- Paste link in an email or send directly from UNIVERGE BLUE™ SHARE using 'Send link via email' from the Action menu



When you create Web Links you can set different permission types, including View only or View and Download. You can also create Upload links as a secure way for people outside your company to share content.

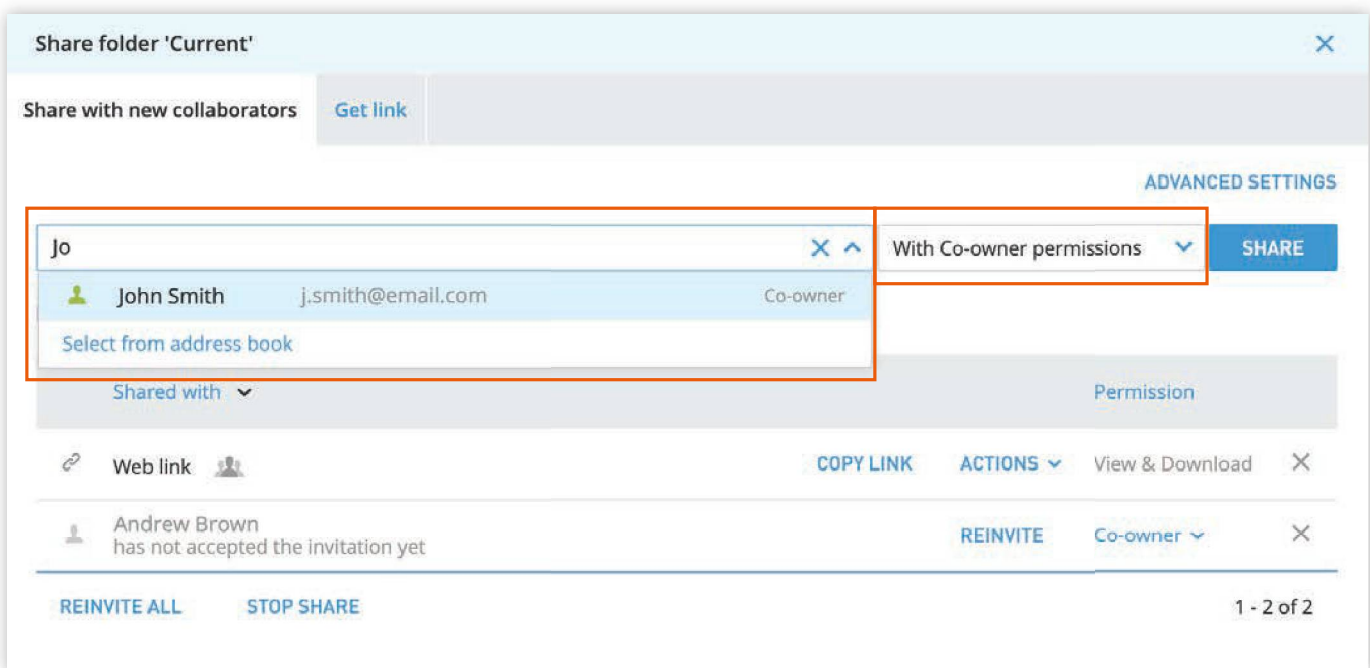
## COLLABORATIVE FOLDER SHARING

To share a folder with collaborators:

- Login to UNIVERGE BLUE™ SHARE Web App
- Select the 'Share' action next to the folder you'd like to share
- For sharing with people inside your company, select the names of the users with which you'd like to share the folder. If you are sharing a folder with an external party (for example, a business partner or client), you can type their email address to send an external sharing request.

Note: depending on your permission settings, your company's account administrator may need to approve external sharing.

- Select Sharing Permissions: View, Modify or Co-Owner



The screenshot shows the 'Share folder' interface. At the top, there's a search bar with 'Jo' entered. Below it, a dropdown menu shows 'John Smith' with the email 'j.smith@email.com' and the role 'Co-owner'. To the right of the dropdown is a 'SHARE' button. Above the dropdown, there's a 'With Co-owner permissions' dropdown menu. Below the search bar, there's a table of shared users:

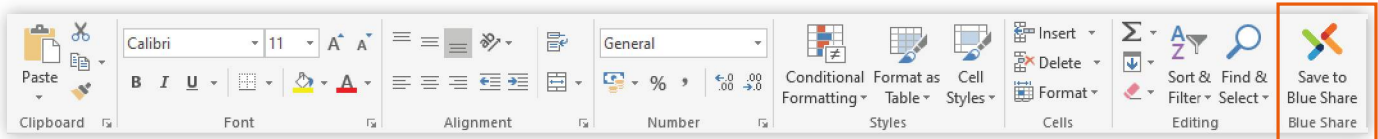
Shared with	Permission
John Smith j.smith@email.com	Co-owner
Andrew Brown has not accepted the invitation yet	Co-owner

At the bottom of the interface, there are buttons for 'REINVOKE ALL', 'STOP SHARE', 'COPY LINK', 'ACTIONS', and 'View & Download'. The page number '1 - 2 of 2' is visible in the bottom right corner.

For any sharing activities, recipients will receive an email notification with a link. Folder sharing invitees must accept an invitation before they can access content. You can also share folders by right-clicking on a file or folder from the desktop.

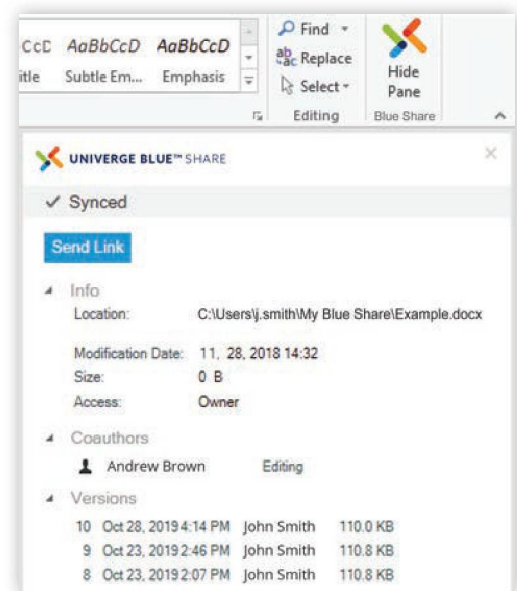
## UNIVERGE BLUE™ SHARE + MICROSOFT® OFFICE® APPS

### Microsoft PowerPoint®, Excel®, and Word®

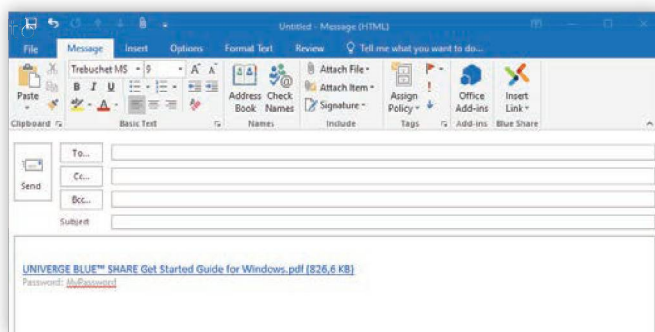
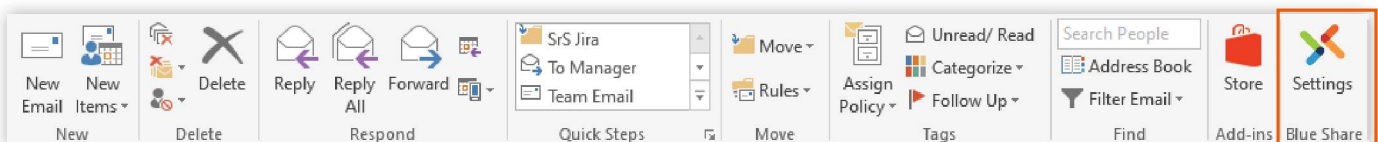


When you install the UNIVERGE BLUE™ SHARE desktop client, plugins for Microsoft® Office® and Microsoft® Outlook® are also installed.

Through the Office® plugin, you can share files, manage versions, and also see who is editing the file at the same time. Access UNIVERGE BLUE™ SHARE by selecting Show Pane in the UNIVERGE BLUE™ SHARE menu on the Office ribbon.



### Microsoft® Outlook®



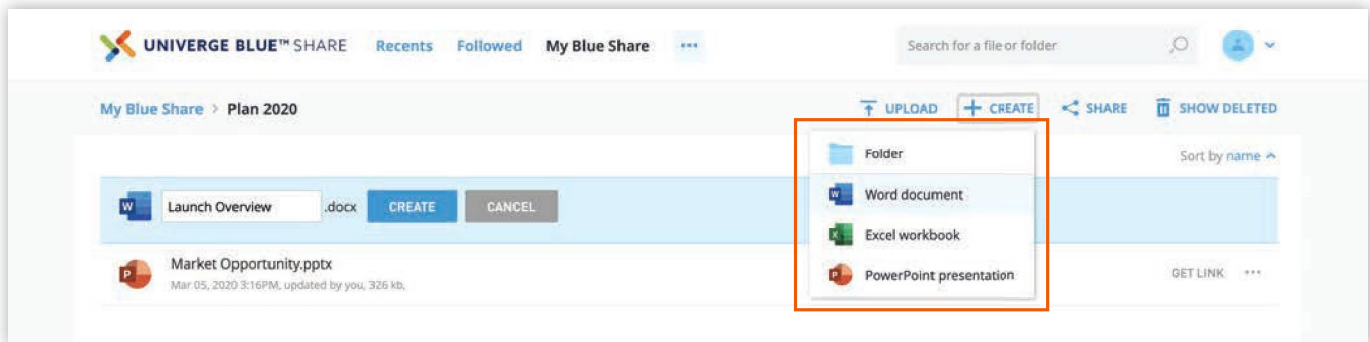
In Outlook®, you can set up UNIVERGE BLUE™ SHARE to automatically replace email attachments with UNIVERGE BLUE™ SHARE Web Links, enabling you to send attachments of any size. You can configure the UNIVERGE BLUE™ SHARE plugin Settings in the Outlook ribbon.



## MICROSOFT® OFFICE® ONLINE

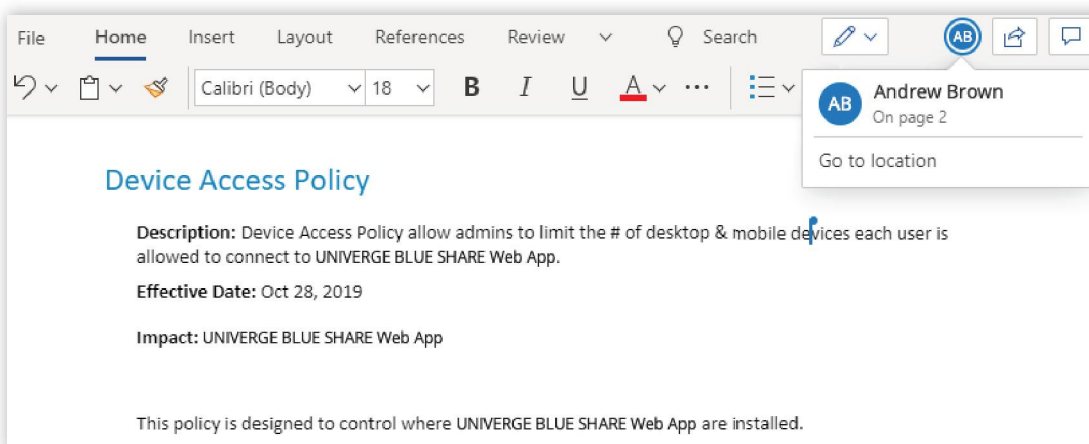
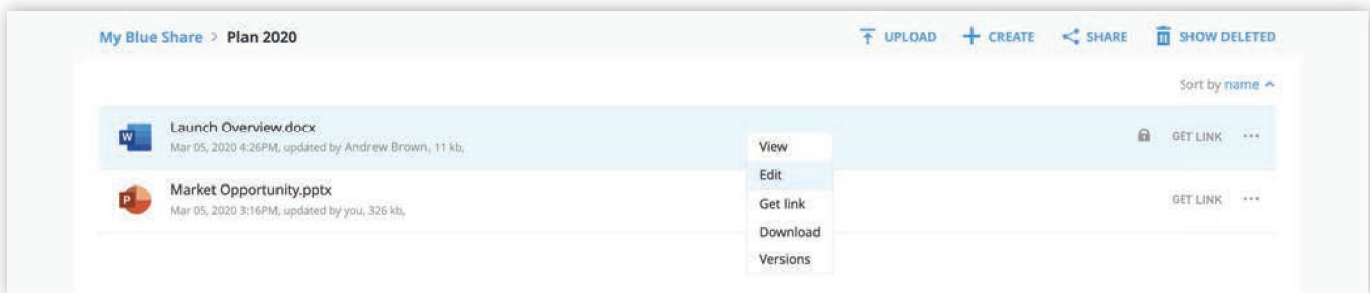
### Create and Edit Files with Microsoft® Office® Online

UNIVERGE BLUE™ SHARE works with web versions of Microsoft® PowerPoint®, Excel®, and Word® to allow you to create and edit files directly from the UNIVERGE BLUE™ SHARE Web App.



### Co-edit Files in Real-time with Multiple Collaborators

When two or more people edit a file through the UNIVERGE BLUE™ SHARE Web App, they can make simultaneous changes to a shared file. Each collaborator's edits will be saved into a single file version.



## MOBILITY

UNIVERGE BLUE™ SHARE mobile apps enable you to access your files from your favorite smartphone or tablet device.

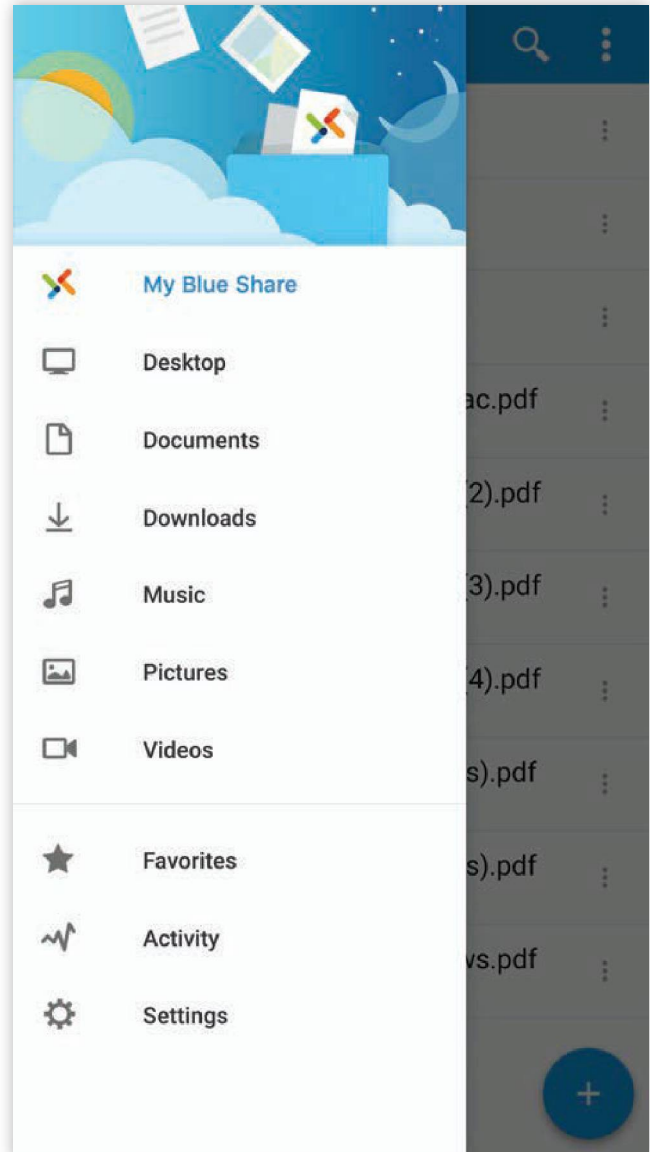
### Installation

To set up UNIVERGE BLUE SHARE™ on your mobile device:

- Open the application store on your mobile device (Apple App Store & Google Play)
- Search for UNIVERGE BLUE™ SHARE
- Install the UNIVERGE BLUE™ SHARE application
- Login with your username and password

### Automatic backup of mobile photos and videos

You can configure UNIVERGE BLUE™ SHARE to automatically upload photos and videos on Android and iOS devices through the Settings menu on the UNIVERGE BLUE™ SHARE mobile application. Mobile gallery content is automatically backed up to the Pictures/Camera Uploads folder which can be accessed via the UNIVERGE BLUE™ SHARE Web and desktop apps (only if Pictures folder is configured to sync).

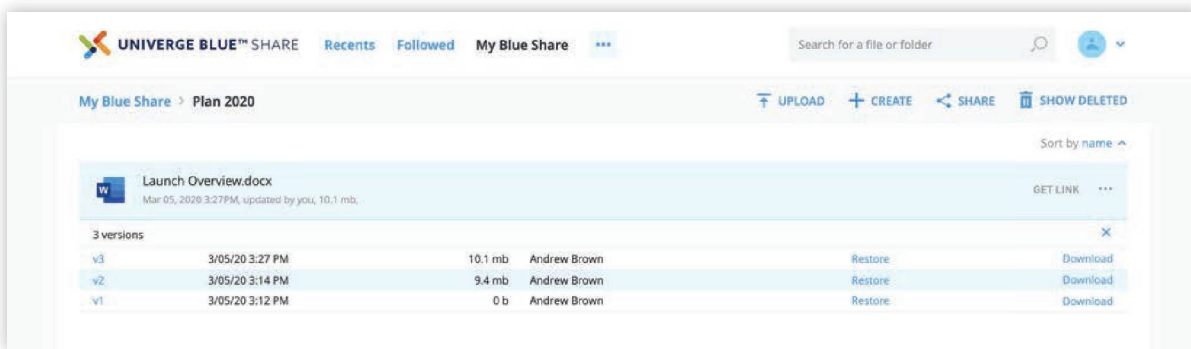


## FILE RESTORE

Changes made to any UNIVERGE BLUE™ SHARE file are tracked, allowing you to easily recover any previous or deleted version of a file.

### Versioning

You can download, preview and restore previous versions of any file using the Versions menu in the UNIVERGE BLUE™ SHARE Web App.



### Restoring Deleted Files

If you accidentally delete a file, you can easily restore it within the Deleted Items view in UNIVERGE BLUE™ SHARE Web App.

Note: You can also permanently delete files within the same view. Once a file has been permanently deleted, it cannot be restored.



Note: if you need to restore a large number of files, in case of a ransomware attack or other type of large file loss, we recommend contacting the person at your company who manages your UNIVERGE BLUE™ SHARE service. They can perform a mass file rollback.

  
OVER  
**\$26 BILLION**  
REVENUE

  
**SMB & ENTERPRISE**  
COMMS **WORLDWIDE**

LEADER IN  
**BIOMETRICS**



  
**75 MILLION**  
GLOBAL USERS

  
**TOP 100**  
GLOBAL INNOVATORS  
(THOMSON REUTERS)



**RECOGNIZED**  
**AS A LEADER**  
BY FROST & SULLIVAN  
IN ENTERPRISE  
COMMUNICATIONS  
TRANSFORMATION

  
**125+**  
**COUNTRIES**

**GLOBAL 100**  
MOST SUSTAINABLE  
COMPANIES IN THE WORLD  
(CORPORATE KNIGHTS)



**4,000+**  
CHANNEL  
PARTNERS

  
**107,000**  
**TEAM MEMBERS**  
WORLDWIDE

For further information please contact NEC Corporation or:

**About NEC Corporation** – NEC Corporation is a leader in the integration of IT and network technologies that benefit businesses and people around the world. By providing a combination of products and solutions that cross utilize the company's experience and global resources, NEC's advanced technologies meet the complex and ever-changing needs of its customers. NEC brings more than 120 years of expertise in technological innovation to empower people, businesses and society.

**APRIL 2020** – NEC is a registered trademark of NEC Corporation. All Rights Reserved. Other product or service marks mentioned herein are the trademarks of their respective owners. Models may vary for each country, and due to continuous improvements this specification is subject to change without notice.

© Copyright 2020. All Rights Reserved.

**Americas (US, Canada, Latin America)**  
NEC Corporation of America  
[www.necam.com](http://www.necam.com)

**EMEA (Europe, Middle East, Africa)**  
NEC Enterprise Solutions  
[www.nec-enterprise.com](http://www.nec-enterprise.com)

**Australia**  
NEC Australia Pty Ltd  
[au.nec.com](http://au.nec.com)

**Asia Pacific**  
NEC Asia Pacific  
[www.nec.com.sg](http://www.nec.com.sg)

**Corporate Headquarters (Japan)**  
NEC Corporation  
[www.nec.com](http://www.nec.com)